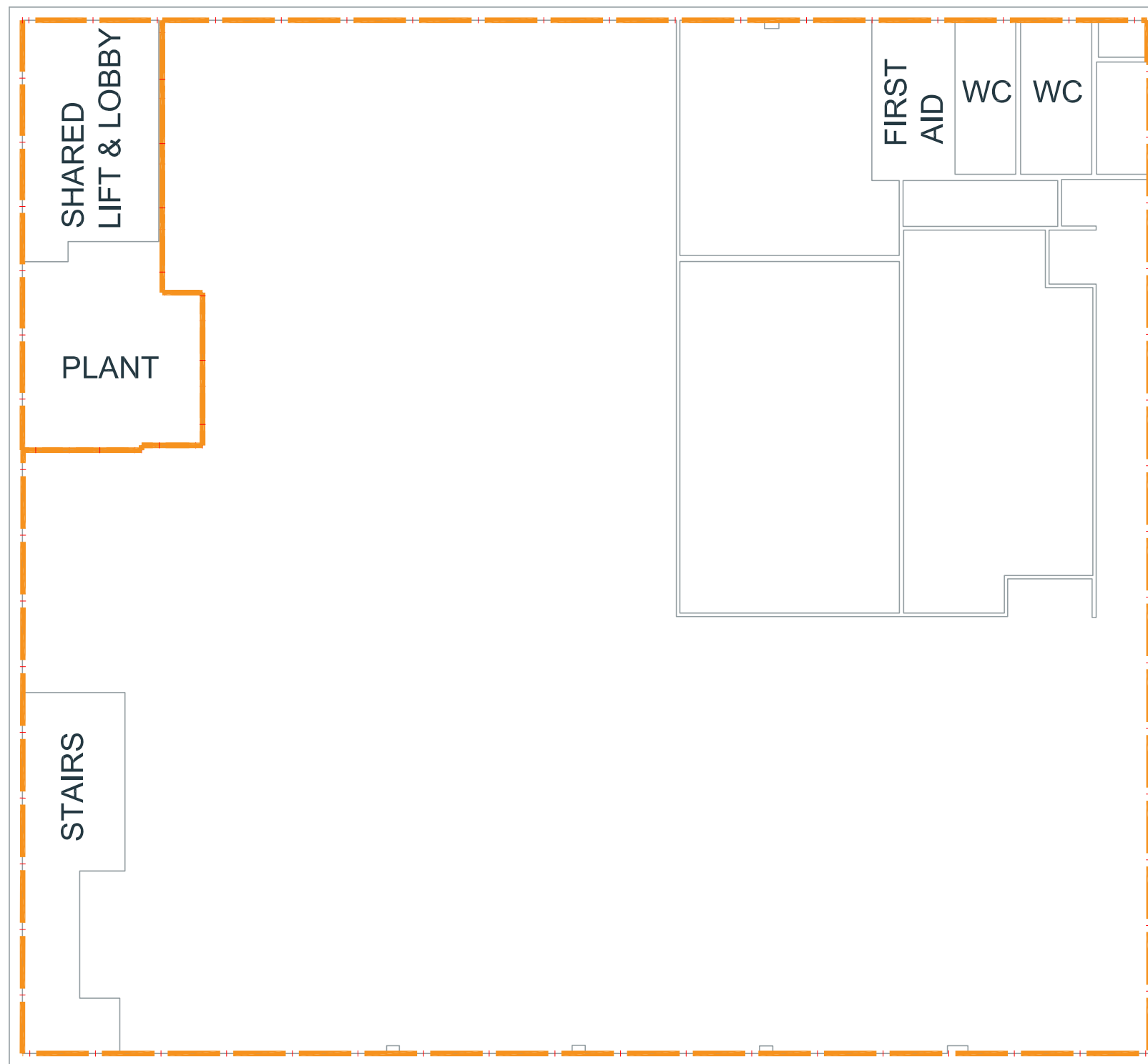


# GIA Plan

1st Floor  
66 Wilbury Way  
Wilbury Park  
Hitchin  
Hertfordshire  
SG4 0TP

GROSS INTERNAL AREA:  
**575.69 m<sup>2</sup> (6,197 ft<sup>2</sup>)**

SHARED LIFT:  
**34.7 m<sup>2</sup> (374 ft<sup>2</sup>)**



1ST FLOOR