

GIA Plan

58 Wilbury Way
Wilbury Park
Hitchin
Hertfordshire
SG4 0TP

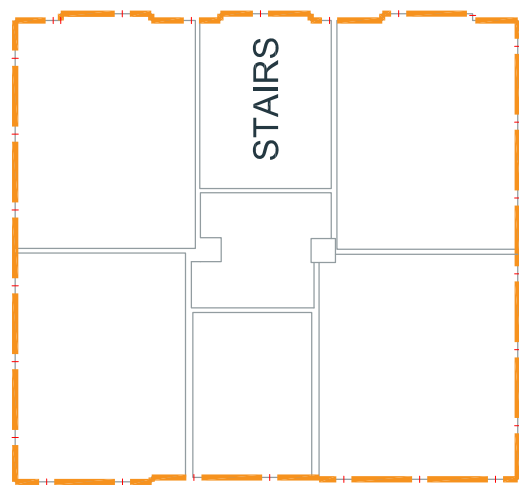
GROSS INTERNAL AREA:
696.49 m² (7,497 ft²)

GROUND FLOOR:
301.76 m² (3,248 ft²)

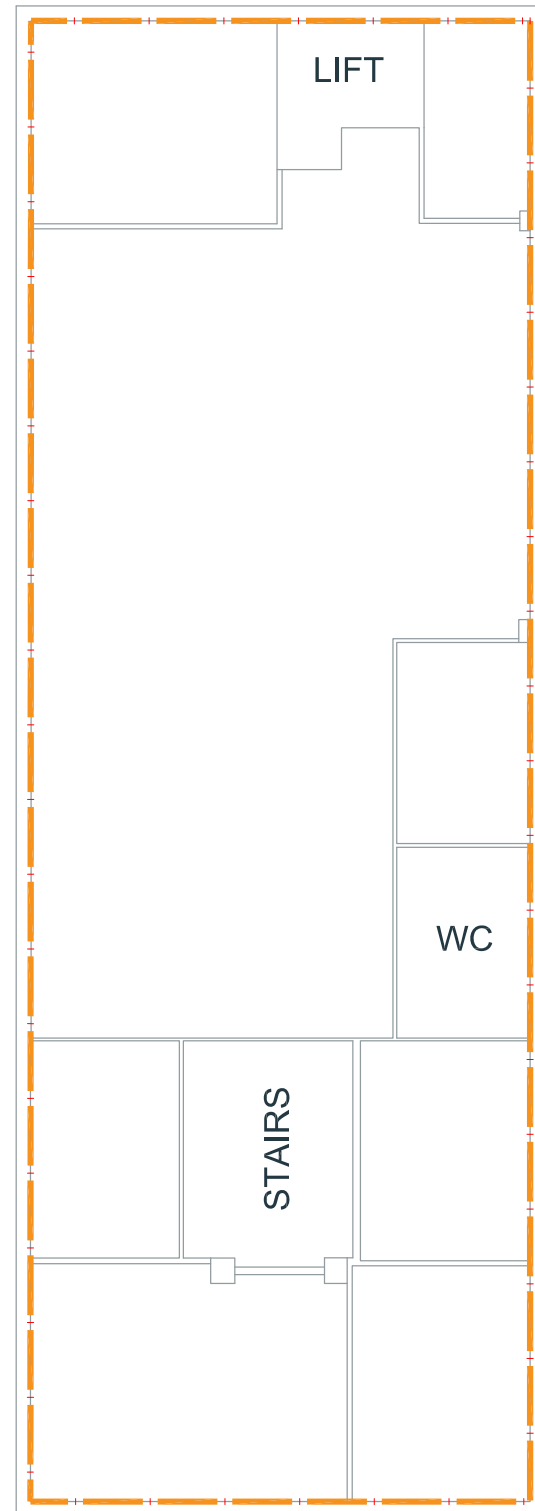
1ST FLOOR:
300.31 m² (3,233 ft²)

2ND FLOOR:
94.42 m² (1,016 ft²)

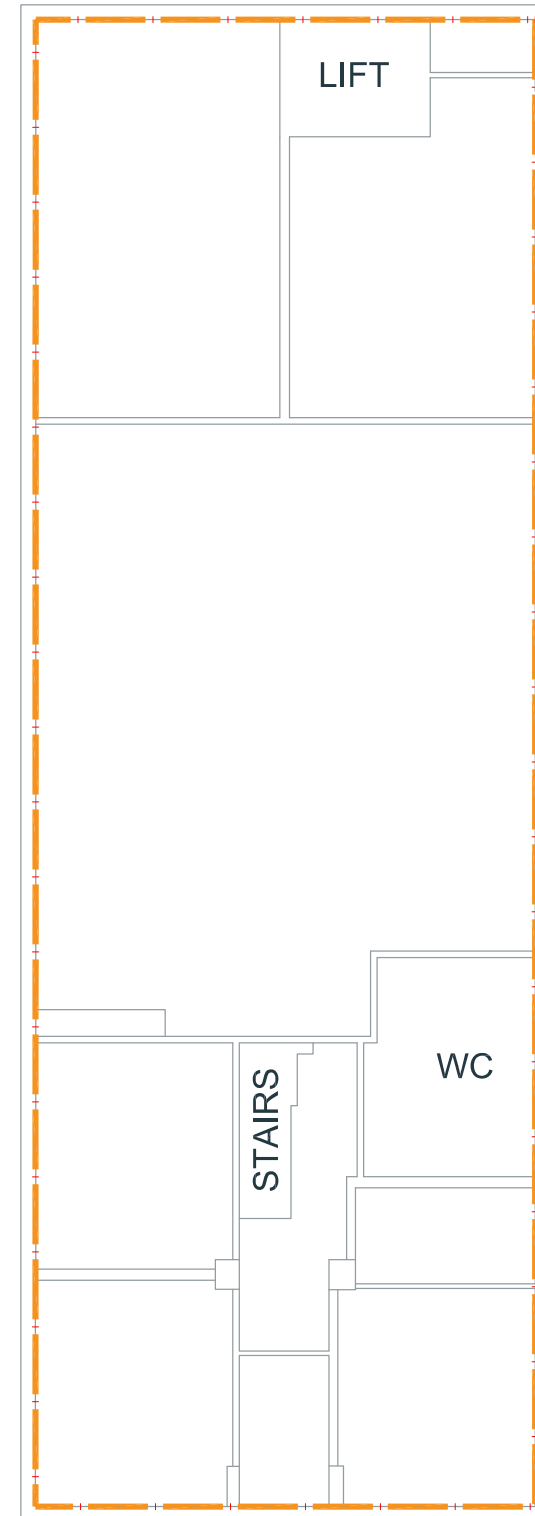
RSD
DW=2250mm
DH=2840mm



2ND FLOOR



1ST FLOOR



GROUND FLOOR